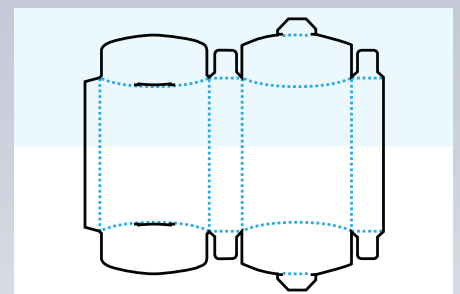


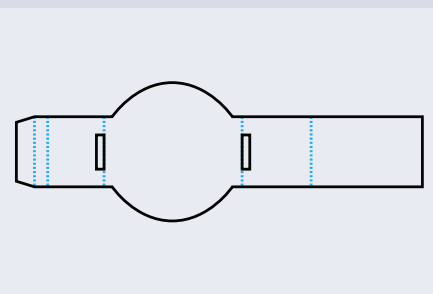


## Products – Range of carton styles.

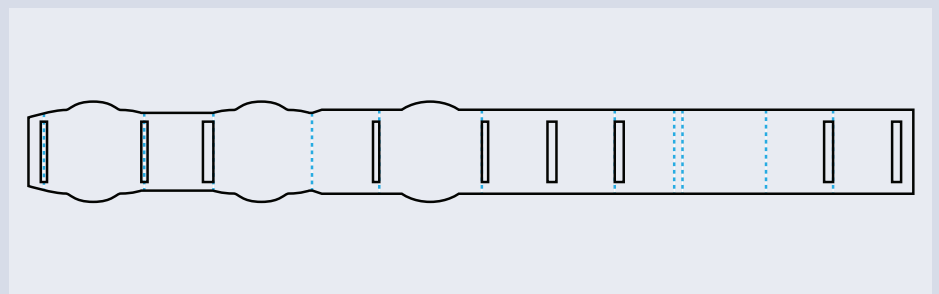
- 1. Crashlock base** – Erected by squeezing the sides to pop into shape creating a carton ready to pack and close. useful for hand packing operations, variations on the base make-up gives extra strength.
- 2. Skillet Ends** – side seam glued in-house. mainly used for machine erected packs on high speed lines. a number of machine manufacturers have their own styles to suit.
- 3. Tuck end cartons** – side seam glued in-house - Used on packing lines and hand packing operations.
- 4. Sleeves** – open ended side seam glued – useful for tubs, multipacks, cans & most clam packed products.
- 5. Trays** – Glued and unglued, single and double walled, used for holding above packs for retail shelves or distribution (with shrink wrap).
- 6. Window patched cartons** – can be added to all cartons 1 - 4 to create a visual display with variations on the film used from Polyester to PLA (Biodegradable). can be machine erectable and hand packed.
- 7. Other pack designs** – there are a variety of other designs that could be called “standard” including Blister cards, carry packs, Tapered cartons etc.
- 8. Along with these** come “creative” concepts that the above usually form the basis of for a pack that is outside the norm. These are not always hand packed, creative designs can also incorporate the ability to pack by machine.



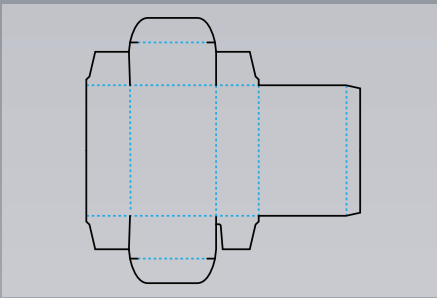
Rounded edge skillet.



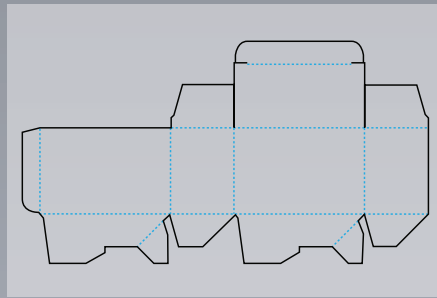
Watch strap sleeve.



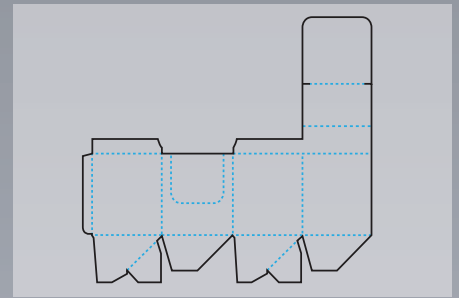
Three pot watch strap sleeve.



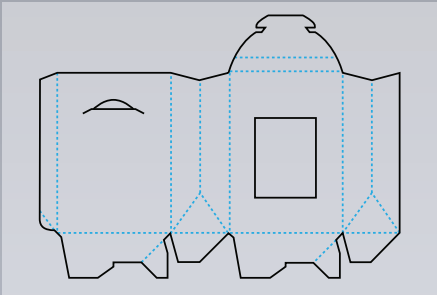
*Aero tuck.*



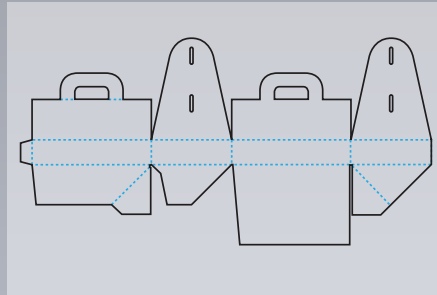
*Crash base tuck top.*



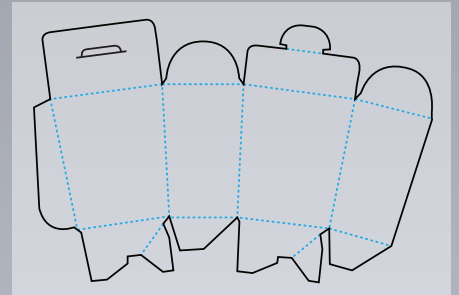
*Crashlock display carton.*



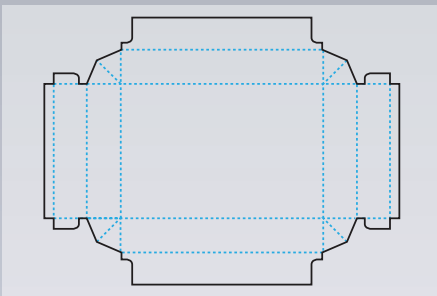
*Crashlock gusseted.*



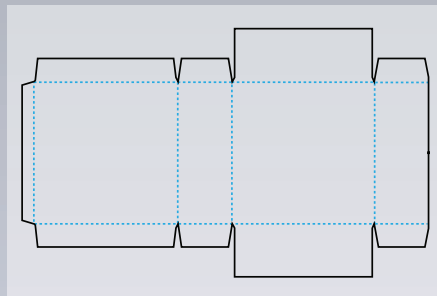
*Crashlock meal box.*



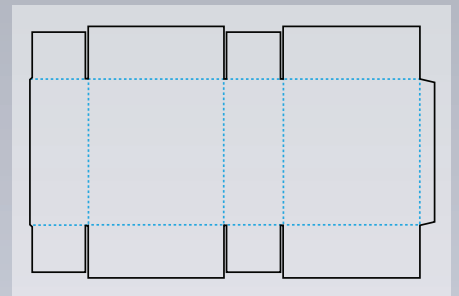
*Crashlock tapered sides.*



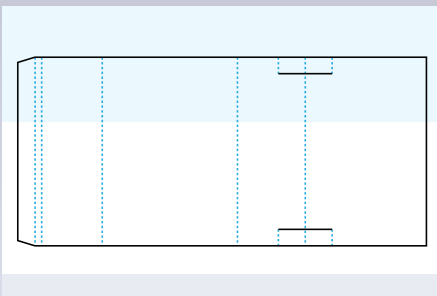
*Double side wall tray.*



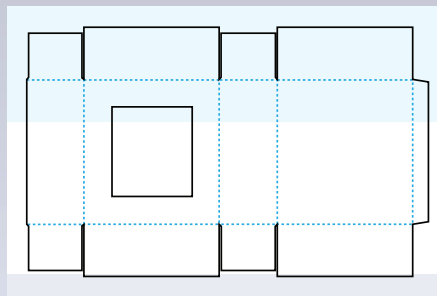
*Economy skillet.*



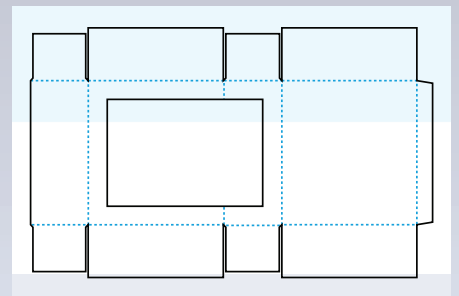
*Full flap skillet.*



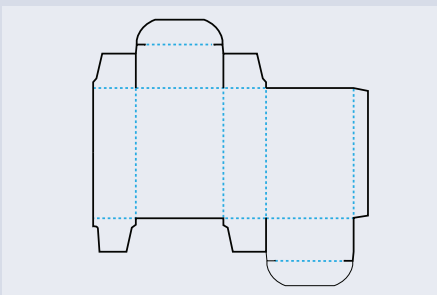
*Tapered sleeve.*



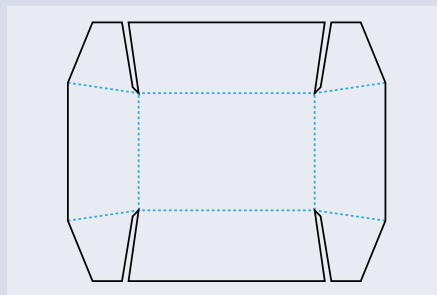
*Skillet with top window.*



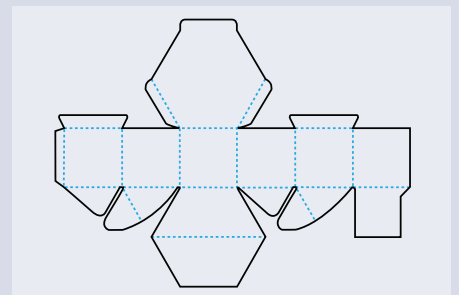
*Skillet with drop long side window.*



*Reverse tuck.*



*Nested tray.*



*Hexagonal crashlock.*